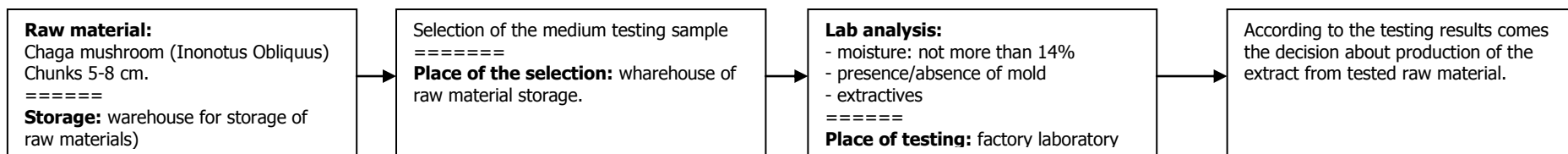


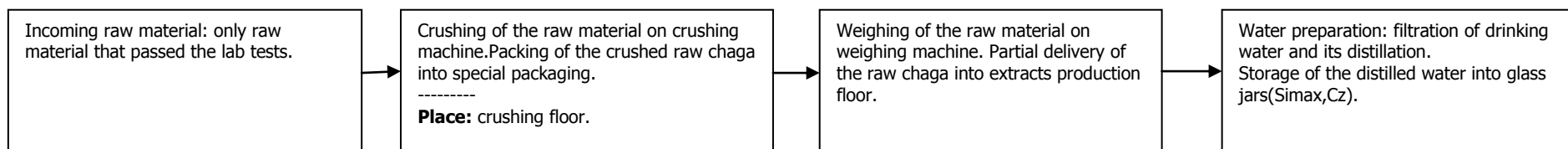
## TECHNOLOGICAL CHART OF CHAGA EXTRACT MANUFACTURING.

Biologically Active Food Supplement " Chaga Dried Extract (Birch mushroom)". Dry water soluble extract with sublimation drying process.

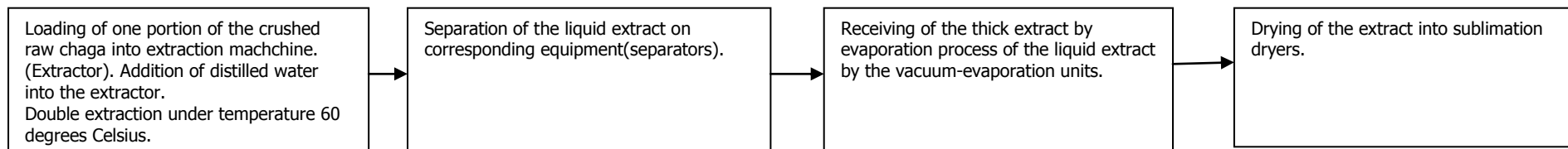
### 1. Stage of initial quality control of raw material.



### 2. Preparation of raw material for extract production.



### 3. Production stage of the chaga extract.



### 4. Finishing stage of the chaga extract manufacturing.

